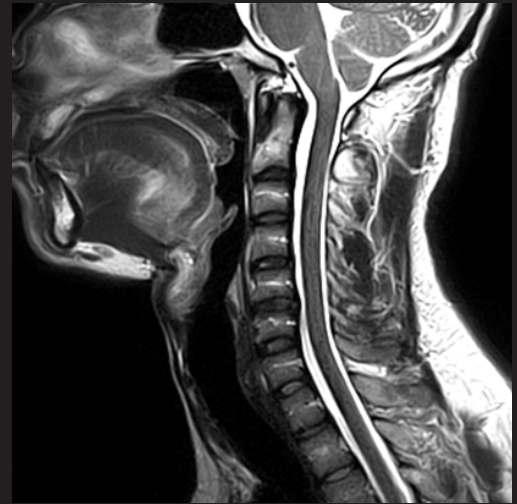
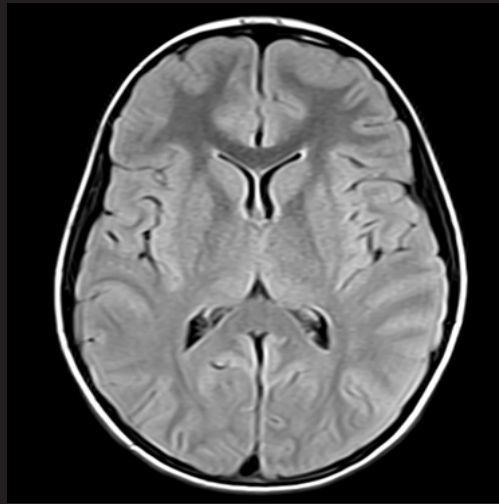
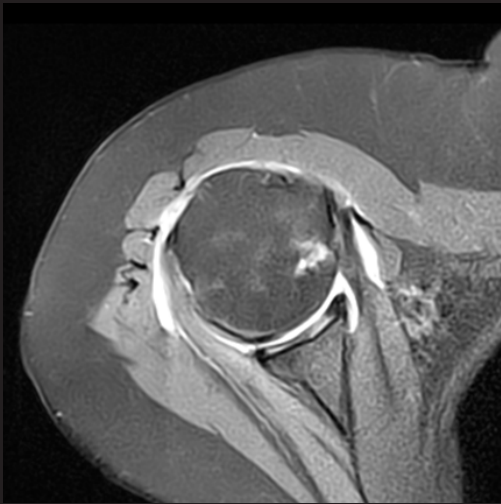


OVAL™ *ECHELON* ALL-AROUND RADAR



Industry's Most Complete & Versatile Motion Compensation

All coils, all planes and all body parts.

Diagnostic results with even the most difficult patients.

With unmatched clinical capability, Hitachi's All-Around RADAR provides an unprecedented ability to acquire complete exams with a motion compensated radial scan technique.

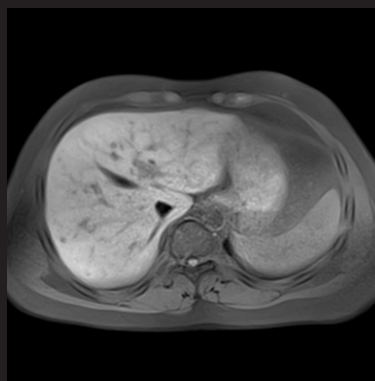
Complete Free-Breathing Abdomen



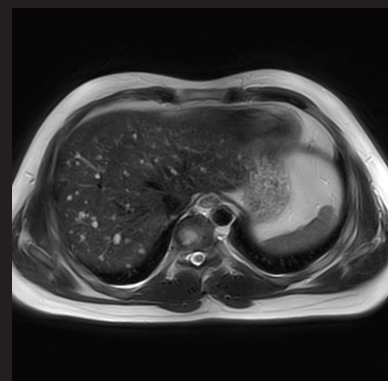
T2 FSE



T2 opFSE FatSat



T1 SpinEcho FatSat



T2 opFSE

Patients' breathing varies depending on their condition and they cannot always hold their breath.

Complete Free-breathing body studies ensure diagnostic quality images the first time.

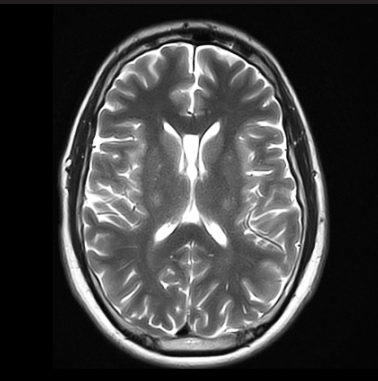
Motion-Free Brain Study



T2 FSE



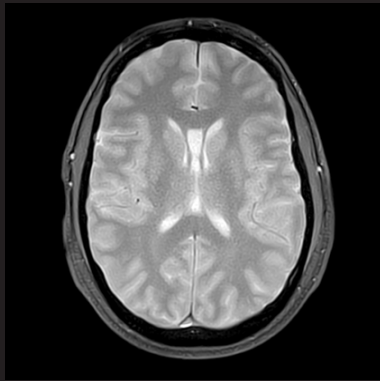
T1 SE



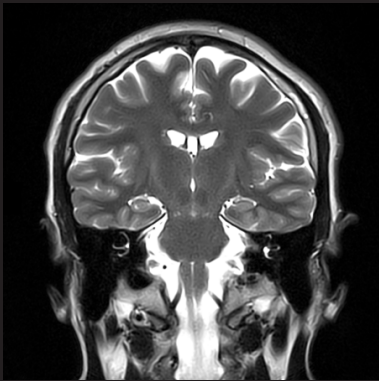
T2 opFSE



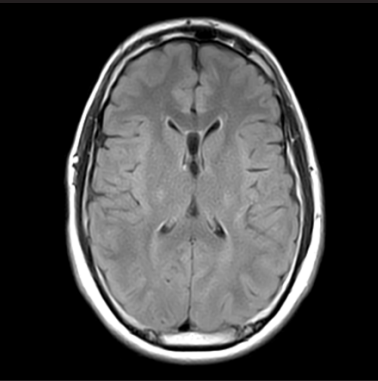
T1 primeFIR



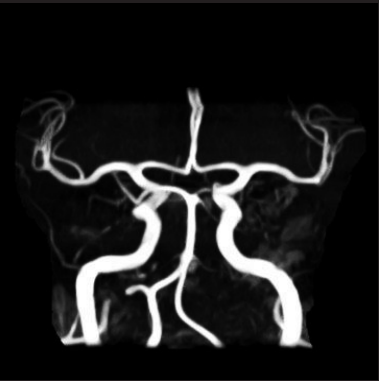
T2* GE



T2 FSE



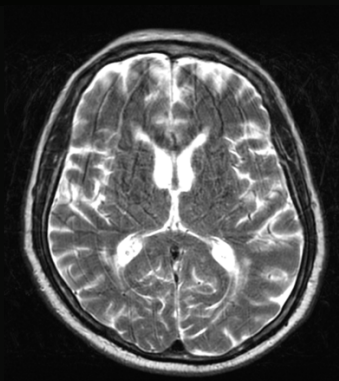
T2 FLAIR



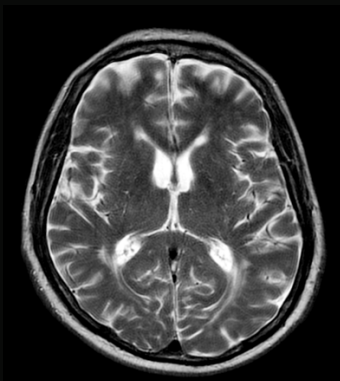
Time of Flight

Unmatched capability with T1 Spin Echo (SE), PD or T2 Fast Spin Echo (FSE), STIR, FLAIR, Gradient Echo (GE), BASG, primeFSE/FIR sequences, with/without Fat Saturation, and an industry exclusive Time of Flight (TOF) MRA. A complete study can be obtained to achieve diagnostic results with challenging patients.

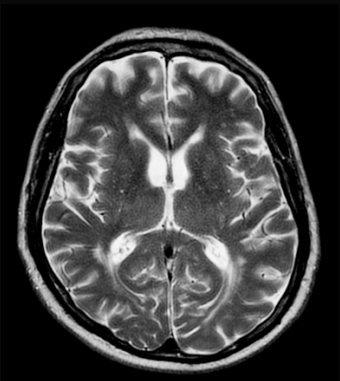
RAPID-RADAR



Conventional: 2:43



RADAR: 4:38



RAPID-RADAR: 2:22

Echelon Oval combines Hitachi's leading RADAR motion compensating technique with RAPID Parallel Acceleration. Scan difficult patients while maintaining conventional scan times.

HITACHI
Inspire the Next

Hitachi Healthcare Americas
www.hitachihealthcare.com