

OVALTM
ECHELON

Advanced Body Scanning



Meeting the challenges of Body MRI Imaging

FatSep - Short breath hold scan time with high SNR

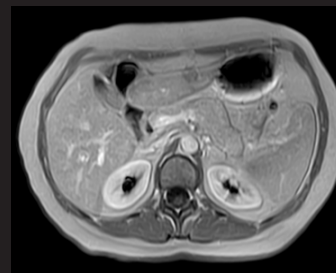
FatSep TRAQ - Multi phase dynamic imaging in a single breath hold

FatSep Navi - Free-breathing, high resolution sequence

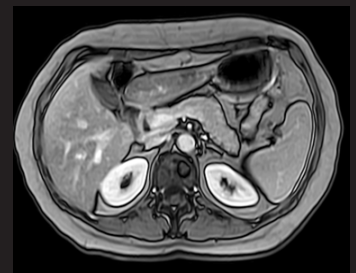
FatSep

Four image contrasts in one acquisition

Consistent uniform fat suppression over a large FOV



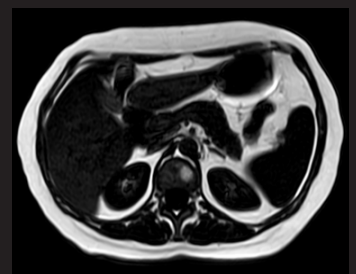
In-Phase



Out-of-Phase



Water Image



Fat Image

FatSep TRAQ

- Time resolved FatSep RSSG dynamic acquisition
- One breath-hold, yielding multiple time phases
- Dynamic Contrast Enhanced (DCE) imaging
- 2-5 phases in 15-25 seconds

5 Second Temporal Resolution



Arterial #1



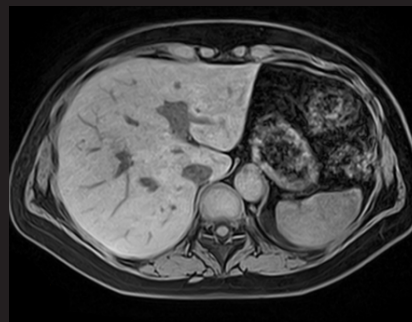
Arterial #2



Arterial #3

FatSep Navi

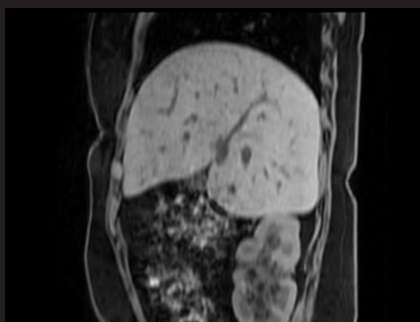
- 3D FatSep RSSG acquisition
- Thin slices and high resolution
- Free breathing navigator gated



With FatSep Navi Respiratory Gating



Without Navi Respiratory Gating



3D High Resolution Reformats

HITACHI
Inspire the Next

Hitachi Healthcare Americas
www.hitachihealthcare.com

0418/1000/DM#126226 Printed in the U.S.A.